

HFE2 Antibody (C-term)
Affinity Purified Rabbit Polyclonal Antibody (Pab)
Catalog # AP9699b**Specification**

HFE2 Antibody (C-term) - Product Information

Application	FC, WB,E
Primary Accession	Q6ZVN8
Other Accession	Q8N7M5 , Q7TQ32
Reactivity	Human
Predicted	Mouse, Rat
Host	Rabbit
Clonality	Polyclonal
Isotype	Rabbit IgG
Calculated MW	45080
Antigen Region	308-338

HFE2 Antibody (C-term) - Additional Information**Gene ID** 148738**Other Names**

Hemojuvelin, Hemochromatosis type 2 protein, RGM domain family member C, HFE2, HJV, RGMC

Target/Specificity

This HFE2 antibody is generated from rabbits immunized with a KLH conjugated synthetic peptide between 308-338 amino acids from the C-terminal region of human HFE2.

Dilution

FC~~1:10~50

WB~~1:1000

E~~Use at an assay dependent concentration.

Format

Purified polyclonal antibody supplied in PBS with 0.09% (W/V) sodium azide. This antibody is purified through a protein A column, followed by peptide affinity purification.

Storage

Maintain refrigerated at 2-8°C for up to 2 weeks. For long term storage store at -20°C in small aliquots to prevent freeze-thaw cycles.

Precautions

HFE2 Antibody (C-term) is for research use only and not for use in diagnostic or therapeutic procedures.

HFE2 Antibody (C-term) - Protein Information**Name** HJV ([HGNC:4887](#))

Synonyms HFE2, RGMC

Function Acts as a bone morphogenetic protein (BMP) coreceptor (PubMed:[18976966](#)). Through enhancement of BMP signaling regulates hepcidin (HAMP) expression and regulates iron homeostasis (PubMed:[18976966](#)).

Cellular Location

Cell membrane; Lipid-anchor, GPI- anchor. Note=Also released in the extracellular space

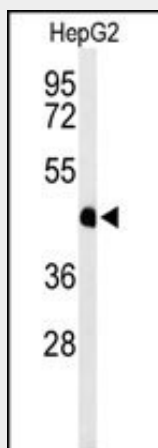
Tissue Location

Adult and fetal liver, heart, and skeletal muscle.

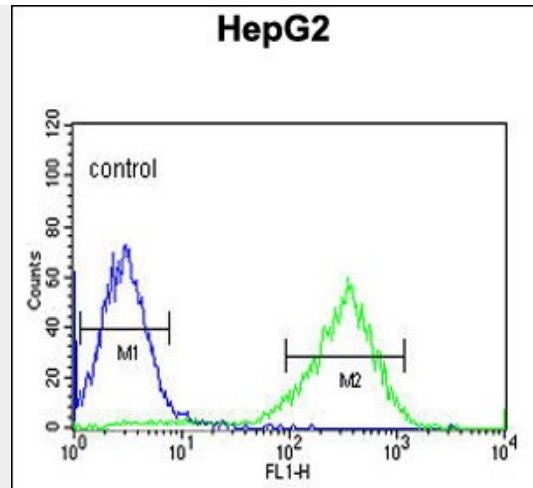
HFE2 Antibody (C-term) - Protocols

Provided below are standard protocols that you may find useful for product applications.

- [Western Blot](#)
- [Blocking Peptides](#)
- [Dot Blot](#)
- [Immunohistochemistry](#)
- [Immunofluorescence](#)
- [Immunoprecipitation](#)
- [Flow Cytometry](#)
- [Cell Culture](#)

HFE2 Antibody (C-term) - Images

Western blot analysis of HFE2 Antibody (C-term) (Cat. #AP9699b) in HepG2 cell line lysates (35ug/lane). HFE2 (arrow) was detected using the purified Pab.



HFE2 Antibody (C-term) (Cat. #AP9699b) flow cytometric analysis of HepG2 cells (right histogram) compared to a negative control cell (left histogram). FITC-conjugated goat-anti-rabbit secondary antibodies were used for the analysis.

HFE2 Antibody (C-term) - Background

HFE2 is involved in iron metabolism. It may be a component of the signaling pathway which activates hepcidin or it may act as a modulator of hepcidin expression. It could also represent the cellular receptor for hepcidin. Alternatively spliced transcript variants encoding different isoforms have been identified for this gene. Defects in this gene are the cause of hemochromatosis type 2A, also called juvenile hemochromatosis (JH). JH is an early-onset autosomal recessive disorder due to severe iron overload resulting in hypogonadotrophic hypogonadism, hepatic fibrosis or cirrhosis and cardiomyopathy, occurring typically before age of 30.

HFE2 Antibody (C-term) - References

Zhu, X., et al. Genet. Epidemiol. 34(2):171-187(2010)
Barton, J.C., et al. Am. J. Hematol. 84(11):710-714(2009)
Zhang, A.S., et al. J. Biol. Chem. 284(34):22580-22589(2009)